

ICE Medic, when every second counts

Drs. Bernard Dagher

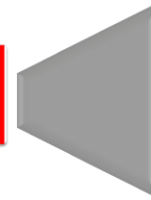


During an emergency, the time used by paramedic personnel and first responders to request Emergency Medical Information (EMI) from the patient/victim before being able to offer the first aid, is known as the "*Critical Time*".

ICE Medic has been developed to reduce this "Critical Time" and provide the paramedics with the appropriate EMI needed, in case the patient is unconscious or in a critical condition.

The ICE Medic Program

ICE Medic program provides its members the ability to administer their EMI in a centralized system. During an emergency, the first responders and paramedics personnel on the scene, retrieve and use this information before giving the member the needed first aid assistance.



The scope of the EMI administered would be limited to a subset of medical data and current treatments; specifically only those what emergency medical assistance would want/need to know during an emergency, such as:

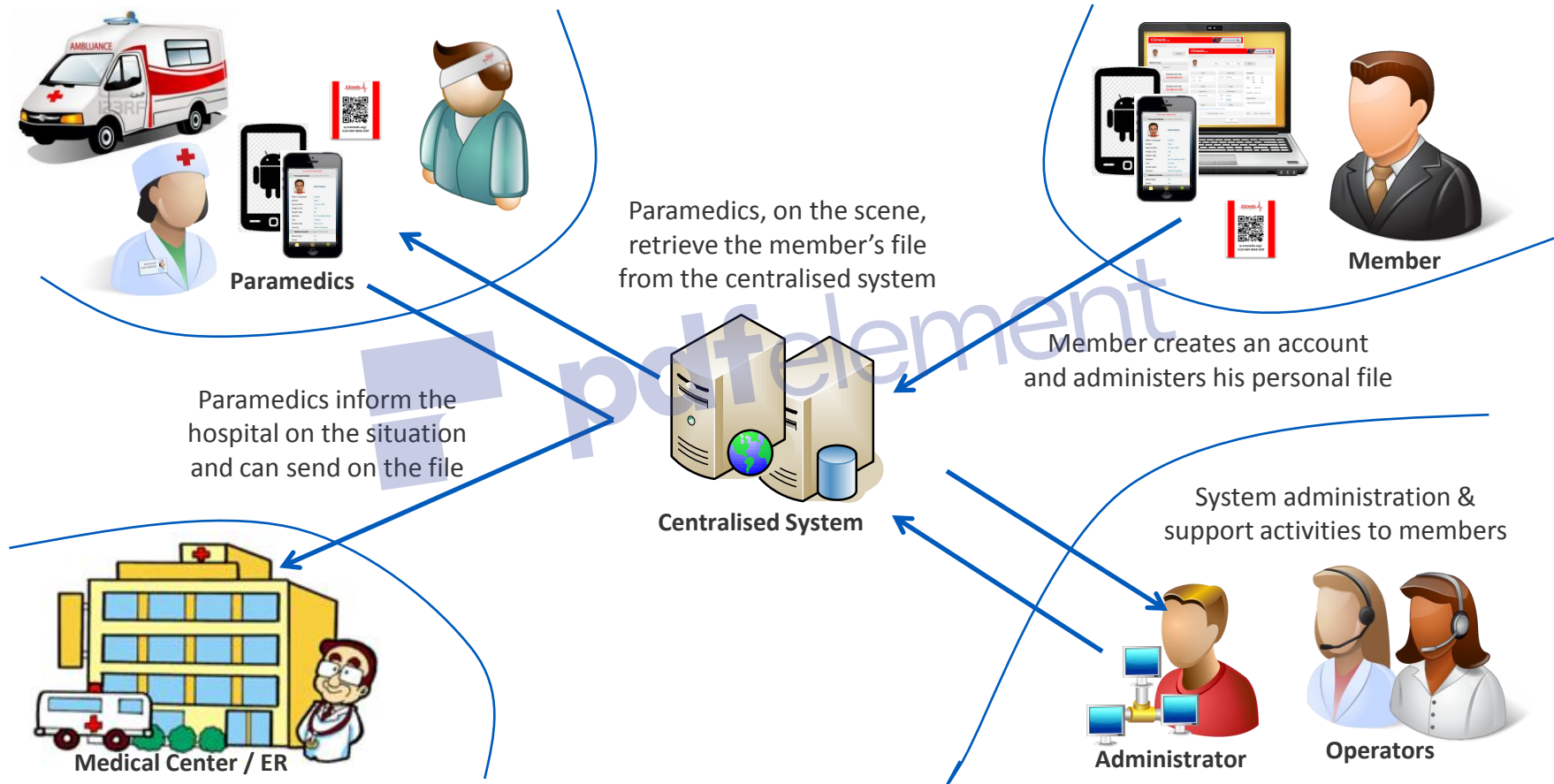
- Blood type and drug allergies,
- Prevailing medical conditions or diseases,
- Past surgeries or anatomical anomalies,
- Current medication and treatments

The provided information is combined with the emergency contact details such as member's- primary, doctor, insurance and pharmacy contacts.

During an Emergency



The ECO System



The Member App



The Member Portal



Sign In

Email Address



Allergies	
1 Penicillin	0
2 Iodine	0
3 Local anaesthetics	0
4 Sulphonamides	0
5 Anti-inflammatory drugs	0
6 Gluten	0
7 Peanut	0
8 Aspiin	0

Surgical History	
15 Cardiac or vascular surgery: Pacemaker	0
16 Implantable defibrillator	0
17 Vascular replacement	0
18 Coronary bypass	0
19 Femoral bypass	0
20 Ventricle/peritoneal shunt	0
21 Bariat	0
22 Liver surgery	0
23 Cholecystectomy	0
24 Appendectomy	0
25 Colectomy	0
26 Splenectomy	0
27 Partial gastrectomy	0
28 Total gastrectomy	0
29 Hysterectomy	0
30 Total or partial left pneumonectomy	0
31 Total or partial right pneumonectomy	0
32 Cystectomy	0
33 Total left nephrectomy	0
34 Total right nephrectomy	0
35 Nephrectomy bilob	0
36 Uterus/transplant	0
37 Kidney/transplant	0
38 Heart transplant	0
39 Lung transplant	0
40 Bone marrow transplant	0

Medical History	
46 Hemostatic disorders - Haemophilia	0
47 Thrombocytopenia	0
48 Cardiovascular / Coronary artery disease	0
49 Valvulopathy	0
50 Congestive heart failure	0
51 Hypertension	0
52 Rhythm disorder	0
53 Severe conduction disorder	0
54 Thoracic aorta aneurysm	0
55 Abdominal aorta aneurysm	0
56 Pulmonary diseases - Asthma	0
57 Chronic respiratory failure	0
58 Pulmonary embolism	0

Enter your password

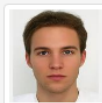
Sign In

Sign Up



Last Login: 29-May-2020 17:16

Options ▾



Change Photo

Overview

Personal

Contact

Medical

Welcome James,

Subscription expiry date: 05-May-2021

Renew subscription

Add alert code



Emergency alert code

A27C-B1BC-F448-A65E



Emergency alert code

9E4F-A155-AF31-D124



Live Demo



Contact

Khalil khalil

Netleb s.a.r.l

CEO

Email: khalil@netleb.net

Tel: +961 3 95 22 32

HQ

P.O.Box 574

1180 AN Amstelveen

The Netherlands

Url: <https://icemedic.org>

ICE Medic® is a registered trademark developed and owned by Euro-Smartict – The Netherlands